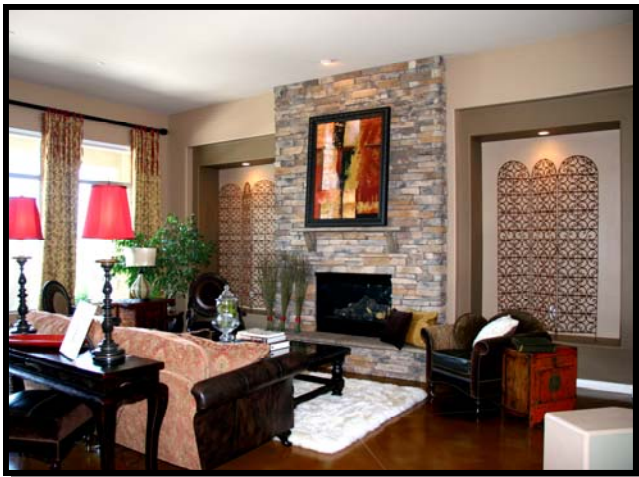


# BREATHTAKING VIEWS ~ 1 ACRE LOT



11211 E. PARADISE LANE  
SCOTTSDALE, AZ 85255



- ◆ 4 Bedroom ~ 2.5 Bath ~ 3,751 Square Feet
- ◆ Gourmet Island Kitchen with SS Appliances, 48" Sub-Zero, Double Ovens, 5 Burner Gas Cooktop, Gorgeous Granite and Alder Cabinets
- ◆ Formal Dining & Living Rm w/Stacked Stone FP
- ◆ Spacious Family Room w/Entertainment Center
- ◆ Elegant Master Suite w/Jetted Tub, Walk-in Glass Block Shower, Travertine Finishes
- ◆ Stained Concrete Floors, Plantation Shutters & Custom Draperies, Designer Paint & Finishes
- ◆ Parklike Terraced Backyard, Built-in Stainless Gas BBQ, Firepit, City & Mtn. Views & Backing a Desert Wash
- ◆ Prestigious Guard Gated 100 Hills Neighborhood
- ◆ Fabulous Amenities of Mountain Park Ranch

Offered at **\$1,350,000** ~MLS# 4201201  
Virtual Tour on: <http://debralee.realtor.com> &  
[www.JamesLeeAZHome.com](http://www.JamesLeeAZHome.com)

**Debra & James Lee**

Business: 480-948-9450

Cell: 602-697-9012 (Debra)

Cell: 602-770-7181 (James)



*All information is deemed reliable, but is not guaranteed.*

All Visual Content by Arizona Imaging & 360 Tours, LLC (480) 314-5862 / [www.ArizonalImaging.com](http://www.ArizonalImaging.com)